

# CONTACT YOUR THS SCHOOL COUNSELOR

If immediate assistance is required for a behavioral health emergency – please immediately contact: Comprehensive Healthcare local crisis line for all. 1-800-572-8122. Information on mental health symptoms, common disorders, and services **Comprehensive Healthcare's website: [www.compc.org](http://www.compc.org)**  
**Yakama Nation Behavioral Health Services: 509-865-2266**  
**National Suicide Prevention Hotline: 1-800-273-8255**

**Dear students and parents,**

**Please email, call, or join the counselor's open office hours via the web (during school hours) to contact your school counselor. They will respond in a timely manner during regular school hours 7:30am-3:00pm.**

## **NANCY AGUILERA COUNSELOR**

**[AGUILERA@TOPPENISH.WEDNET.EDU](mailto:AGUILERA@TOPPENISH.WEDNET.EDU)**  
509-865-8056  
GOOGLE MEETS/OFFICE  
HOURS LINK - ASK ADVISORY TEACHER



### Freshman Class of 2024

Advisory Teacher: C. Alcalá/  
B. Cordova / M. Jimenez / J. Perez

### Sophomore Class of 2023

Advisory Teacher: R.  
Livingston / J. Piper / R. Rangel

### Juniors Class of 2022

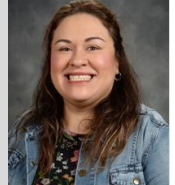
Advisory Teacher: L. Brown/  
J. Cortes / J. Hines / B. Valencia

### Senior Class of 2021

Advisory Teacher: M. Ayling / J. Ramirez/  
Jose Sanchez / L. Thomas

## **MANUELA (NELLY) GUZMAN COUNSELOR**

**[MGUZMAN@TOPPENISH.WEDNET.EDU](mailto:MGUZMAN@TOPPENISH.WEDNET.EDU)**  
509-865-8032  
GOOGLE MEETS/OFFICE  
HOURS LINK - ASK ADVISORY TEACHER



### Freshman Class of 2024

Advisory Teacher: M. Gonzalez/  
S. Hayden/ C. Sommerstrom / E. Tait

### Sophomore Class of 2023

Advisory Teacher: P. Aguirre / B. Baker/  
L. Nunez / R. Rousculp

### Juniors Class of 2022

Advisory Teacher: Bertha Cerna/  
Geordy Nelson / Kegan Powers

### Senior Class of 2021

Advisory Teacher: D. Gore / A. Gutzwiler/  
R. Martin / A. Perez

## **SYLVIA NISHI COUNSELOR**

**[SNISHI@TOPPENISH.WEDNET.EDU](mailto:SNISHI@TOPPENISH.WEDNET.EDU)**  
509-865-1109  
GOOGLE MEETS/OFFICE  
HOURS LINK - ASK ADVISORY TEACHER

### Freshman Class of 2024

Advisory Teacher: J. Sanchez/ J. Smith/  
L. Strahle

### Sophomore Class of 2023

Advisory Teacher: T. Hernandez / P. Perez / J. Roy  
L. Wise

### Juniors Class of 2022

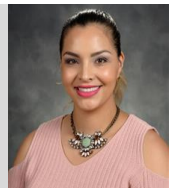
Advisory Teacher: D. Delgado/ I. Macias / C.  
Nichols / G. Simpson

### Senior Class of 2021

Advisory Teacher: D. Fry/ R. Gonzalez/ N. Wickson

## **ANGELICA WALLE MIGRANT ADVOCATE COUNSELOR**

**[AWALLE@TOPPENISH.WEDNET.EDU](mailto:AWALLE@TOPPENISH.WEDNET.EDU)**  
509-865-8029  
GOOGLE MEETS/OFFICE  
HOURS LINK - ASK ADVISORY TEACHER



WILDCAT NATION



#TOPPENISHSTRONG